



PARSHAS TAZRIAH/METZORAH

Rav Mordechai Kalatsky
May 2nd 2025/4th Iyar, 5785



“AND THE METZORAH SHALL CALL OUT: UNCLEAN, UNCLEAN.” (Vayikra 13:45)

One of our sages wrote that this verse can be read as, “Unclean,” the unclean person thinks everyone else is unclean. That is, a person who finds fault with others is at his core projecting his own faults and imperfections on them. As the Rabbis have said, “Those who try to invalidate others do so with their own blemishes.”

One way to discover your faults and blemishes is to see what weaknesses you notice in people. If I focus on specific on negative aspects of others, it is possible that I have that tendency myself.

For this week let us try to realize what aspects of other people we find difficult or bothersome and utilize it as an opportunity to look inward and correct that weakness inside first.

Have a good Shabbos!

Rabbi Kalatsky

ZMANIM

Fri, Erev Shabbos, Parshas Tazriah Metzorah, May 2nd

Shacharis 7 AM
Early Mincha 6:35 PM
CL 6:50-7:05 PM
Reg CL 8:02 PM

Shabbos May 3rd

Shachris 8:45 AM
Pirkei Avos 6:50 PM
Mincha 7:40 PM
Maariv 9:12 PM

Sunday May 4th

Shachris 8:30 AM
Mincha/Maariv 8:10 PM

Monday-Thursday May 5th-8th

Shachris 7 AM
Mincha/Maariv 8:10 PM

Friday Erev Shabbos Acharei Mos Kedoshim

Shachris 7 AM
Early Mincha 6:40 PM Candle
Lighting 6:55 PM - 7:10 PM
Reg CL 8:11 PM

COMMUNITY NEWS



The Women's Shabbos Shiur

May 3rd Parshas Tazria - Metsorah 6:30 PM
at the home of Dr William & Mrs Farrel Braunstein
2830 Inglewood Ave S
Guest Speaker: Rabbi Menachem Mendel Pam

May 10th Acharei Mos - Kedoshim 6:30 PM
at the home of Rabbi & Mrs Goldberger
2650 Quentin Ave S
Guest Speaker: Rabbi Avigdor Goldberger

May 17th Parshas Emor 6:30 PM
at the home of Rabbi & Mrs Idstein
2545 Monterey Ave S
Guest Speaker: Rabbi Pinchus Idstein

May 24th Parshas Behar - Bechukosal 6:30 PM
at the home of Rabbi & Mrs Weinberg
2818 Raleigh Ave S
Guest Speaker: Rabbi Moshe Weinberg



KI is pleased to announce that we are in the process of searching for an Outreach Director to expand our kiruv opportunities and enhance our impact outside the eiruv.

As part of this process, we are delighted to welcome Rabbi & Mrs. Flom from Tampa, Fl, who are visiting this week as candidates for the position.

Please join us in giving them a warm welcome and helping them feel at home in our Kehillah.

MAZEL TOV

Mazel Tov to Ethan & Sophie Trotz on the birth of a baby girl!

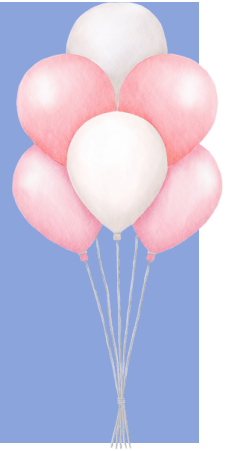


KIDDUSH



Kiddush this week is sponsored by Blair and Eric Trotz in honor of their new granddaughter Sunny Bibi Trotz, born to Sophie and Ethan Trotz. Mazel Tov also to grandparents Julie and Bill Gotlieb.

Shalosh seudos still available.



HALACHA

As a safeguard against the possibility of a person transgressing the Torah prohibition of Kotzeir (reaping) on Shabbos, the Chachamim instituted a series of Rabbinic prohibitions. These prohibitions restrict various activities that may potentially lead one to violate the melachah of Kotzeir. Among these activities are:

- Climbing a tree
- Leaning on a tree
- Placing an object on a tree
- Removing an object from a tree
- Shaking a tree
- Smelling fruits still attached to a tree
- Riding an animal
- Touching plants
- Moving fruits that fell from a tree on Shabbos

The Chachamim were concerned that if one were permitted to engage in these seemingly harmless actions, it could easily lead to an actual violation of Kotzeir. Therefore, they enacted a prohibition against them. These activities are collectively referred to as mishtamesh b'ilan—using a tree. The details and halachic parameters of each of these prohibitions will be elaborated upon in the coming weeks.

RELEVANT HALACHA SHAILOS-GIVEN BY THE RAV AFTER MINCHA ON SHABBOS DURING THE LEARNING SEDER

Halachos of Muktzah

A lulav is on my table on Shabbos, can I move it ?

Can I use a pen to scratch my back? If yes, can I put the pen back into the closet after I am done?

I need a key on a keyring with keys that are muktzah, Can I move them?

I want to pour my contents of Shabbos food into a smaller pot. Can I use the smaller pot? Can I move the pots blocking it to get to the smaller pot?

Can I move beans that are blocking my access to a food I need?

Is raw fish muktzah? The original from Yidden who started the sushi fad, how could they eat the raw fish if it was muktzah?

I have a car with no lights working and something was left inside, can I open the door on shabbos?

Can I open my dishwasher or dryer on shabbos to put something in or take out? Can I close the door?

KI KID'S CORNER



WHERE TO THIS WEEK?
 WHATS THE MIDDOS CHALLENGE?
 I WANT TO HEAR THE KI KIDS SONG!
 +MORE

**KI KIDS
 HOTLINE**
 5 4 5 4 3 7
 Dial 541-8KI-KIDS

SHIURIM



Wednesdays 9am - Chovos Halevovos-Rabbi Kalatsky

Shabbos 8:15am – Parenting-John Ghermezian

Shabbos- Pirkei Avos 35 minutes before Mincha

Shabbos-Relevant Halacha Shailos with Rabbi Kalatsky 10 minutes after mincha

Shabbos Daf Yomi – 50 minutes before Mincha Zevi Segal

Shabbos Nesivos Shalom - 50 minutes before Mincha

*On-Going
 Sunday-Thursday
 Nights*

Join the Women's
 Tehillim Conference Call
 with Rebbeitzin Kalatsky

- 1 - Shmiras HaLashon
- 2 - Hilchos Shabbos
- 3 - Perakim Tehillim

9:30 - 9:45 PM Nightly
 9:30 AM Friday Mornings
 971-224-6611
 code: 694613#

Tzitzis
in minneapolis

Call or text Rabbi & Mrs. Mandelbaum 732.927.3746
 ALL CHILDREN'S SIZES

Poly/Cotton • Non-Fray • Made in Israel
 No Tag

Attention Minneapolis!

**KIPPAH
 KONNECTION**

We've got you covered!

Devorah Connor
 845.558.2474
 2907 Ottawa Ave
 Call or Text

Solid, Color, Pattern
 Velvet, Cotton, Linen,
 and Faux-Leather
 All kippahs \$10

Sponsor a Kiddush at KI

Standard Kiddush - \$300
Upgraded Kiddush - \$450
 Make your next simcha kiddush @ KI -
 reach out Sid for simcha pricing
Contact Sid Usem 651-253-1099

Kenesseth Israel Congregation | office@kenessethisrael.org
Rabbi Mordechai Kalatsky

Chaim Goldberger Rabbi Emeritus - Jerome Herzog zl Rabbi Emeritus KI

Board of Directors: Dr. Joey Greenberg-President, Sid Usem-Vice President,
 Adam Galili & Nachshon Fertel Co-Treasurers,
 Mike Barry, Jake Berenberg, Ezra Daitchman, Melvin Graf, Michael Moskowitz, Yehuda Polter,
 Zevi Segal, Shlomo Schloss, Moshe Tabbouche

The KI Bulletin is generously sponsored by Melvin & Miriam Graf